

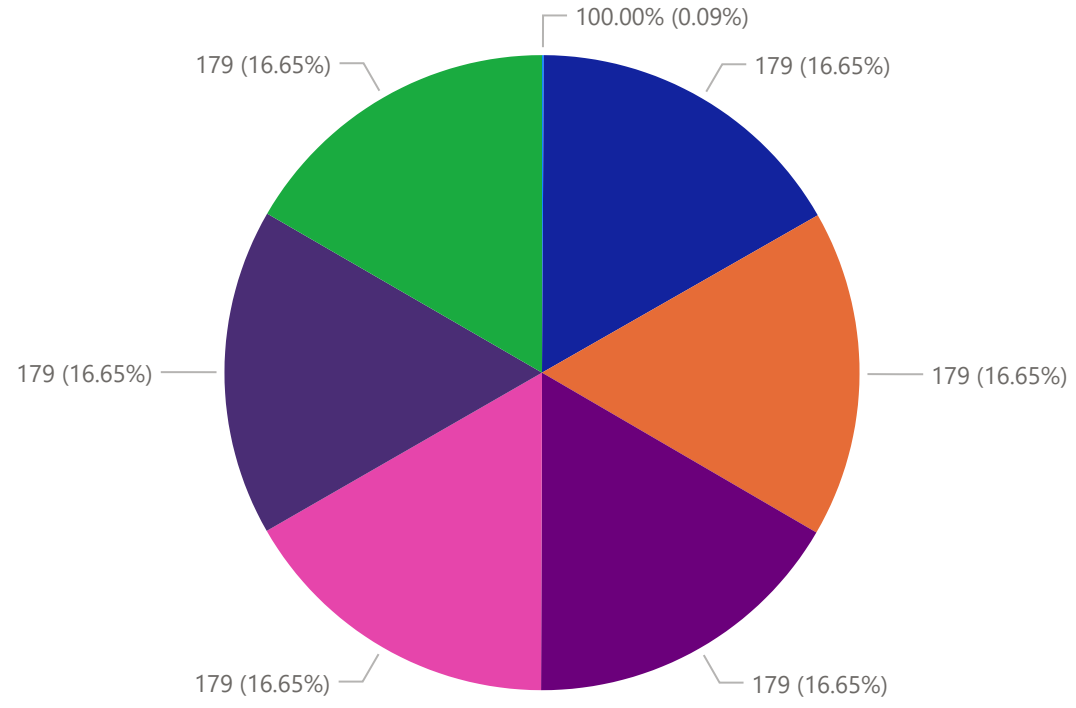
Auto recovery contains some recovered files that haven't been opened.

View recovered files

- Burger King
 - KFC
 - McDon...
 - Pizza Hut
 - Taco Bell
 - Wendy's
- Zesty Onion Ring Dipping Sauce (1 oz)
 - Whopper® Sandwich with Cheese
 - Whopper® Sandwich
 - Whopper JR.® Sandwich
 - Vanilla Milk Shake
 - Unsweetened Tea
 - Triple Whopper® Sandwich with Cheese
 - Triple Whopper® Sandwich
 - Sweet Tea
 - Strawberry or Grape Jam (packet)
 - Strawberry Milk Shake
 - Sprite®‡
 - Spicy Crispy Chicken Sandwich
 - Spicy Crispy Chicken Jr.
 - Spicy Chicken Nuggets- 6pc
 - Spicy Chicken Nuggets- 4pc
 - Spicy Chicken Nuggets- 20 pc
 - Spicy Chicken Nuggets- 10 pc
 - Soft Serve Cup
 - Soft Serve Cone
 - SOFT DRINKS BY CUP SIZE (*no ice)
 - Smoothie: Strawberry Banana 16 fl oz
 - Single Stacker King
 - Single Quarter Pound King Sandwich
 - Side Items
 - Sausage, Egg, & Cheese Biscuit
 - Sausage Biscuit
 - Ranch Dipping Sauce (1 oz)
 - Pie made with TWIX®
 - PB&J Jamwich
 - Pancake and Sausage platter
 - Original Chicken Sandwich

26680 7901 8995 205 1940 997 96680 2964 47

Nutrition Expectations ● Trans Fat(g) ● Sugars(g) ● Saturated Fat(g) ● Protein(g) ● Fiber(g) ● Cholesterol(mg) ● Carbs(g)



Ask a question about your data

Try one of these to get started

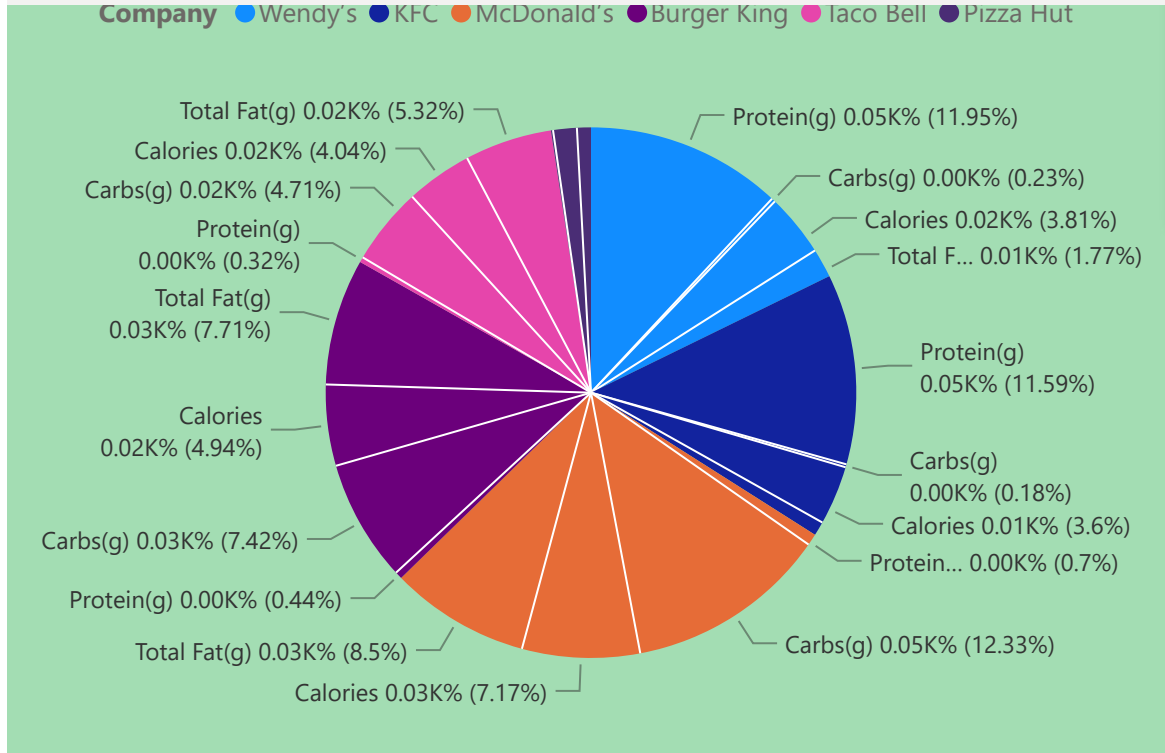
- total calorie
- maximum sugar
- total trans fat
- average 2021 total unit

Show all suggestions

Auto recovery contains some recovered files that haven't been opened.

View recovered files

want to eat healthy or do you want be overweight and out of shape? The food you eat are the building blocks of your body and what you eat may tell how long you live your life without having to visit the hospital in your lifetime. <https://nutritionfacts.org>



Item	Sugars(g)	Sodium (mg)	Total Fat(g)	Trans Fat(g)	Saturated Fat(g)
Zesty Onion Ring Dipping Sauce (1 oz)	21185	307508	9615	13400	3081

Item	Calories	Carbs(g)	Cholesterol(mg)	Fiber(g)	Protein(g)
Wild Strawberry Freeze™ (20 oz)	325575	26618	224815	10446	110436

Step right up and pick your poison

Folks, for our presentation today we have on the upper left 7 fast food chains and the items they sell with their nutritional values also available for your viewing.

On the right side we have the top 50 Fast food chains with sales data being displayed of each company



Top 50 Fast-Food Chains as of 2021	Avg Sales per \$1000	Company Stores	U.S. (Millions - U.S Dollars)
Starbucks	\$1,200	8953	\$24,300
Chipotle	\$2,641	2966	\$7,547
Panda Express	\$2,173	2187	\$4,452
Arby's	\$1,309	1116	\$4,462
Panera Bread	\$2,700	950	\$5,650
Whataburger	\$3,640	742	\$3,089
McDonald's	\$3,420	663	\$45,960
Papa Johns	\$1,147	600	\$3,486
Little Caesars	\$1,000	580	\$4,185
Raising Cane's	\$4,893	544	\$2,377
Five Guys	\$3,172	479	\$2,093
Taco Bell	\$1,823	462	\$12,600
Wendy's	\$1,895	403	\$11,111
Domino's	\$1,317	375	\$8,641
In-N-Out Burger	\$3,200	370	\$1,175
White Castle	\$1,749	349	\$615
QDOBA	\$1,006	333	\$835
Sonic Drive-In	\$1,643	320	\$5,835
Krispy Kreme	\$4,000	307	\$996
Total	\$92,883		